

# Hi Energy Rabbit Lac & Gro

**Hi Energy Rabbit Lac and Gro Pellets** are formulated as a complete feed to provide all of the nutritional requirements of rabbits. They are properly balanced, ideal for the needs of breeding and growing rabbits.

## ANALYSIS

	As Fed	DM @ 89 %
<b>PROTEIN (min)</b>	17.0 %	19.1 %
<b>FAT (min)</b>	2.0 %	2.2 %
<b>FIBRE (min)</b>	14.0 %	15.7 %
<b>UREA</b>	Nil	Nil

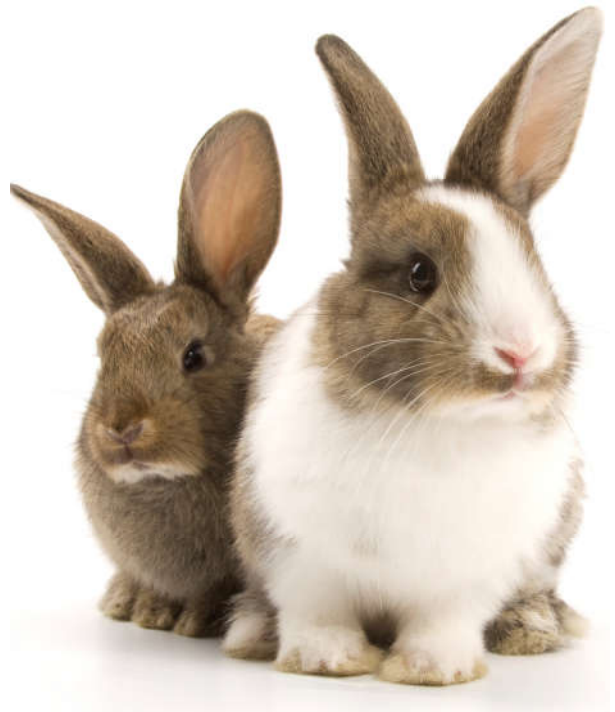
## FEEDING RECOMMENDATIONS

Introduce **Hi Energy Rabbit Lac & Gro Pellets** gradually, increasing the amount fed until the desired rate is reached. Do not make sudden changes to the diet as digestive problems may occur.

This product provides all of the dietary needs of growing or breeding rabbits, and as such can be fed as their sole source of feed.

If desired, it can also be fed with good quality roughage such as grass, hay or chaff.

Ensure that rabbits have access to cool clean water at all times.



## INGREDIENTS

**Hi Energy Rabbit Lac & Gro** is formulated from a selection of the following ingredients: Wheat, barley, canola, peas, lupins, soyabean, lucerne, and products derived from these ingredients.

Vegetable oil, limestone, di-calcium phosphate, salt, lysine, methionine threonine, tryptophan, bentonite, antioxidants.

**Vitamins:** A, D<sub>3</sub>, E, K, thiamine (B<sub>1</sub>), riboflavin (B<sub>2</sub>), pantothenate (B<sub>5</sub>), pyridoxine (B<sub>6</sub>), B<sub>12</sub>, niacin, biotin, folic acid, and choline.

**Minerals:** Calcium, phosphorus, sodium, chloride, cobalt, copper, iodine, iron, manganese, selenium and zinc.



## WARNINGS

This feed has been manufactured specifically for animals as described, do not feed to any other species of animal.

Store in a cool, Dry place away from direct sunlight.

THIS PRODUCT DOES NOT CONTAIN RESTRICTED ANIMAL MATERIAL



Phone: 08 8562 8140 Email: [info@lauckemills.com.au](mailto:info@lauckemills.com.au)

**AUSTRALIAN OWNED AND MADE**  
[www.lauckemills.com.au](http://www.lauckemills.com.au)

